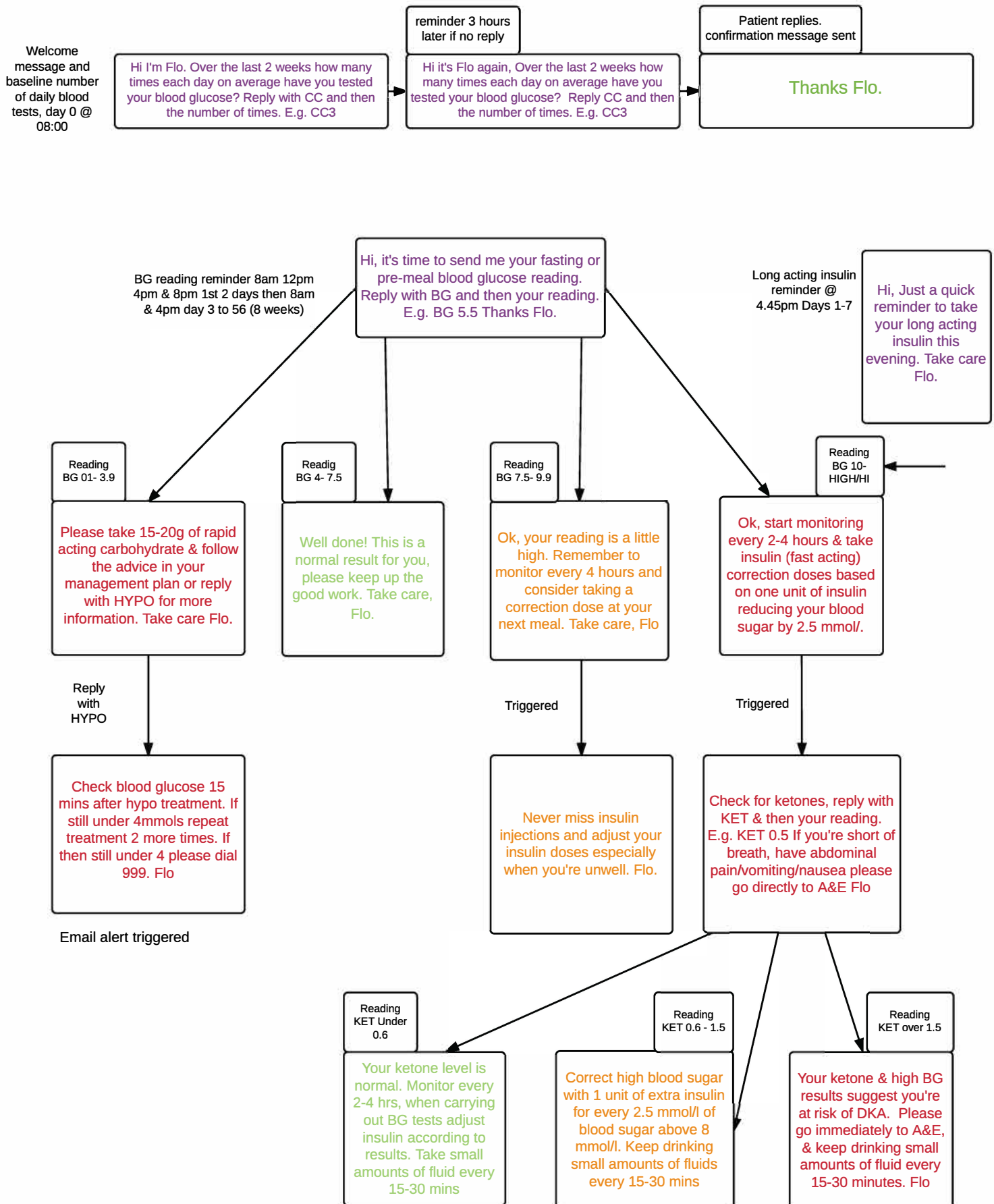
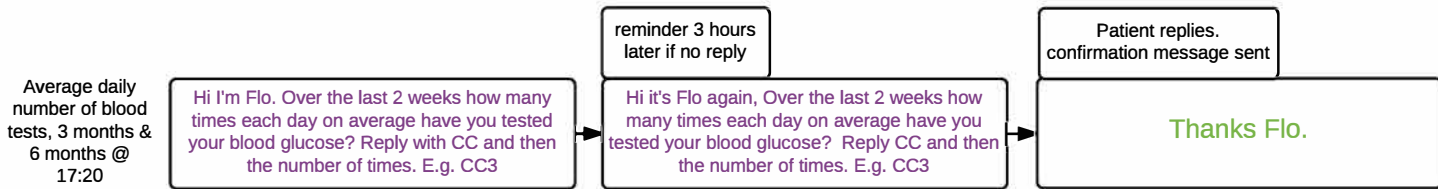


NHS A&A DKA Protocol v1.2 (Page 1 of 2)



NHS A&A DKA Protocol v1.2 (Page 2 of 2)

Florence



End of service message and evaluation reminder, month 6 @ 17:30

Hi, your service is coming to an end soon, shortly I'll be asking some questions about your experience & your feedback would really be appreciated Take care Flo

Survey Q1, @ 17:32

Hi, Do you think that Flo has helped you to remember check your blood glucose regularly? Reply with #1 for yes or #2 for no. E.g. #1.

Hi, it's Flo again. Do you think that Flo has helped you to remember check your blood glucose regularly? Reply with #1 for yes or #2 for no. E.g. #1.

Thanks.

Survey Q2, @ 17:34

Do you now regularly check for ketones when your blood glucose goes above 15 2 or more times? Reply with #1 for yes or #2 for no. Eg #1 for yes.

Hi it's Flo again, Do you now regularly check for ketones when your blood glucose goes above 15 2 or more times? Reply with #1 for yes or #2 for no. Eg #1

Thanks.

Survey Q3, @ 17:36

Has Flo helped you to remember to take your long acting insulin? Reply #1 for yes or #2 for no. E.g. #1

Hi it's Flo again. Has Flo helped you to remember to take your long acting insulin? Reply #1 for yes or #2 for no. E.g. #1

Thanks.

Survey Q4, @ 17:38

Would you recommend Flo to someone else with your condition? Reply with #1 for yes or #2 for no. E.g. #1

Hi it's Flo again. Would you recommend Flo to someone else with your condition? Reply with #1 for yes or #2 for no. E.g. #1

Thanks for your feedback. Take care Flo.